

Notice to Mariners

Date of Issue:	26 February 2025
Subject:	Arven Offshore Wind Farm: Passive Acoustic Monitoring Mooring Redeployment
NtM Number:	002
Revision:	2
Author:	C Newman, Consents

1 Introduction

Arven Offshore Wind Farm will recover, service and re-deploy Passive Acoustic Monitoring (PAM) moorings in and around the Arven Offshore Wind Farm area to gather data on marine mammal activity.

Five moorings were deployed in September 2024, as advised by a previous Notice to Mariners. The moorings will now be recovered, serviced and re-deployed in the same locations by the vessel *Dolphin*. The PAM moorings are each composed of an anchor weight, rope with acoustic release system and scientific PAM equipment suspended beneath a set of floats. The PAM moorings have no surface expression (i.e. no surface marker buoy) and the top of the mooring extends approximately 4 - 6 metres above the seabed. The images below provide an indication of mooring setup.

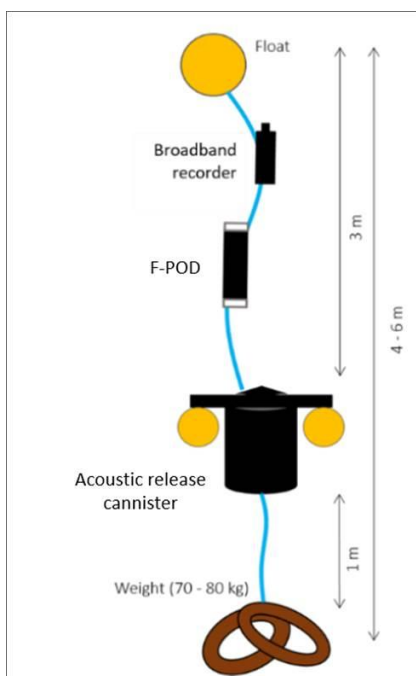


Figure 1 PAM mooring configuration



2 Area of Operations

The PAM moorings were deployed in September 2024 in the locations shown below. It is intended to recover, service and then re-deploy the moorings in the same locations. A subsequent NtM will be issued to confirm the re-deployed locations of the PAM moorings.

Table 1 Deployed PAM mooring locations

PAM Station	WGS84 Latitude - Longitude				WGS84 UTM Zone 30N			
	Lat (DM.m)	Lon (DM.m)	Lat (D.m.s)	Lon (D.m.s)	Lat (DD)	Lon (DD)	Easting (m)	Northing (m)
AV-N1	60° 19.295' N	0° 15.267' W	60° 19' 17.700" N	0° 15' 16.020" W	60.32158	-0.25445	651622.16	6690383.2
AV-N2	60° 19.104' N	0° 00.905' E	60° 19' 06.240" N	0° 00' 54.300" E	60.31840	0.01508	666516.57	6690679.29
AV-N3a	60° 12.835' N	0° 06.010' W	60° 12' 50.100" N	0° 06' 00.600" W	60.21392	-0.10017	660665.90	6678764.75
AV-Sa	60° 10.612' N	0° 27.487' W	60° 10' 36.720" N	0° 27' 29.220" W	60.17687	-0.45812	640999.53	6673822.81
AV-Wc	60° 26.008' N	0° 54.447' W	60° 26' 00.480" N	0° 54' 26.820" W	60.43347	-0.90745	615174.23	6701516.6

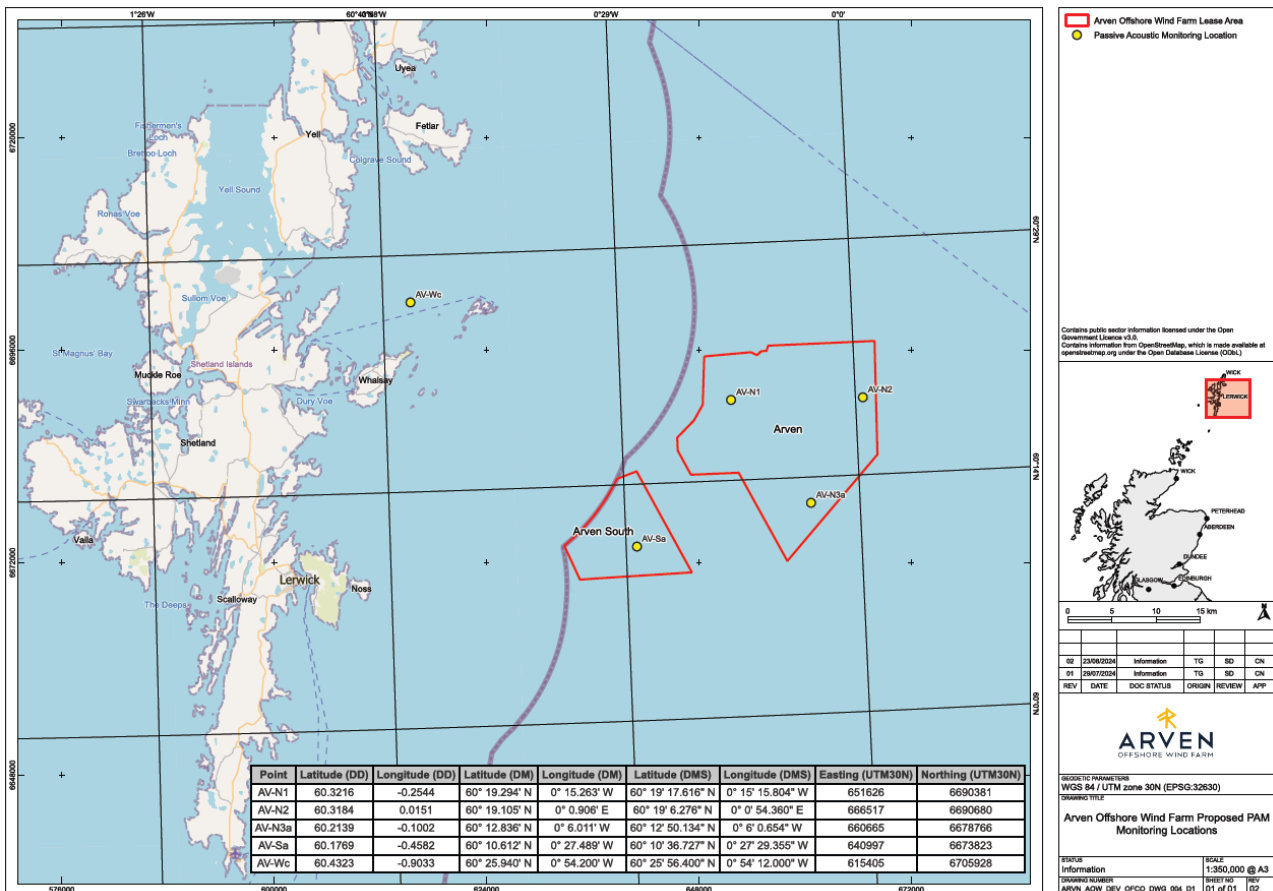


Figure 2 Deployed PAM Mooring Locations




3 Schedule

The PAM moorings recovery, servicing and re-deployment is expected to take place no earlier than 27 February 2025, depending on weather conditions. The recovery and re-deployments are expected to be made over the course of two separate day trips, weather permitting.

4 Vessels Associated with the Activity

Table 2 Dolphin

Vessel name:	Dolphin
Vessel type:	Category 3 Workboat (Mono Hulled Workboat)
Vessel role:	PAM mooring deployment and recovery
Call sign:	MGJB3
On board contact:	Master: John Clark 07887 621670 john.clark@oceankinetics.co.uk Vessel email: john.clark@oceankinetics.co.uk
Image of vessel:	

5 Fisheries Liaison

Fisheries liaison associated with the activity will be co-ordinated by Brown and May Marine. For any commercial fishery queries please contact the Arven Company Fisheries Liaison Officer (CFLO), telephone: +44 7760 160039 or email: alex@brownmay.com.

6 Distribution List

A central list of recipients is maintained by the Company Fisheries Liaison Officer; if you are not the appropriate recipient of these notices, or do not wish to receive the notices in the future, please contact us at email:



alex@brownmay.com. A copy of this notice can also be found at [Document Library - Arven Offshore Wind Farm](#)

